

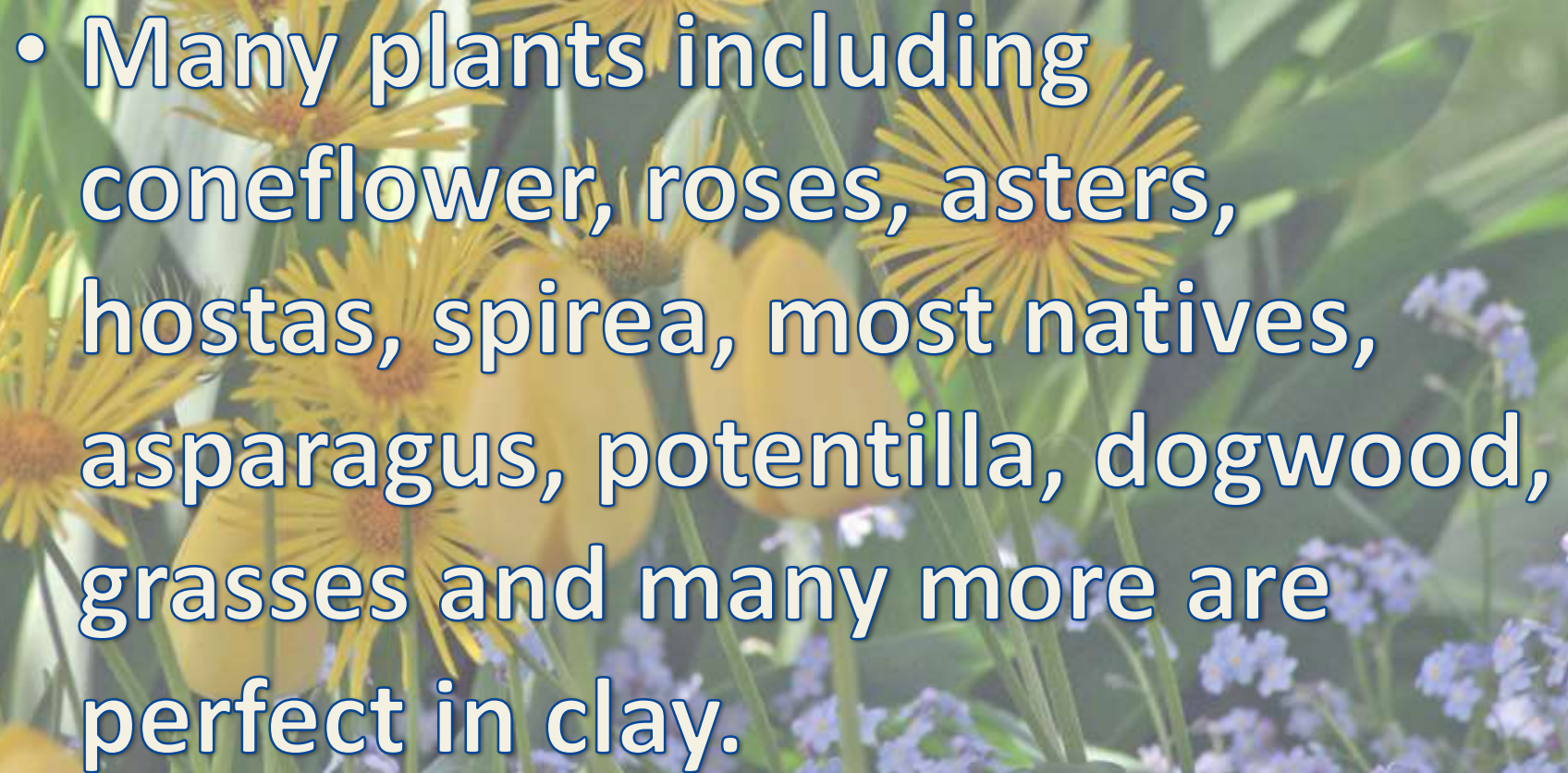
A vibrant garden scene featuring a variety of flowers. In the foreground, several yellow tulips are in bloom, their petals a bright, sunny yellow. Behind them, numerous yellow daisies with dark brown centers are scattered throughout. The background is filled with a dense cluster of small, light purple forget-me-not flowers. The overall atmosphere is bright and cheerful, with soft lighting and a lush green backdrop of foliage.

Landscape Plants

Where, What, Why &
Uses

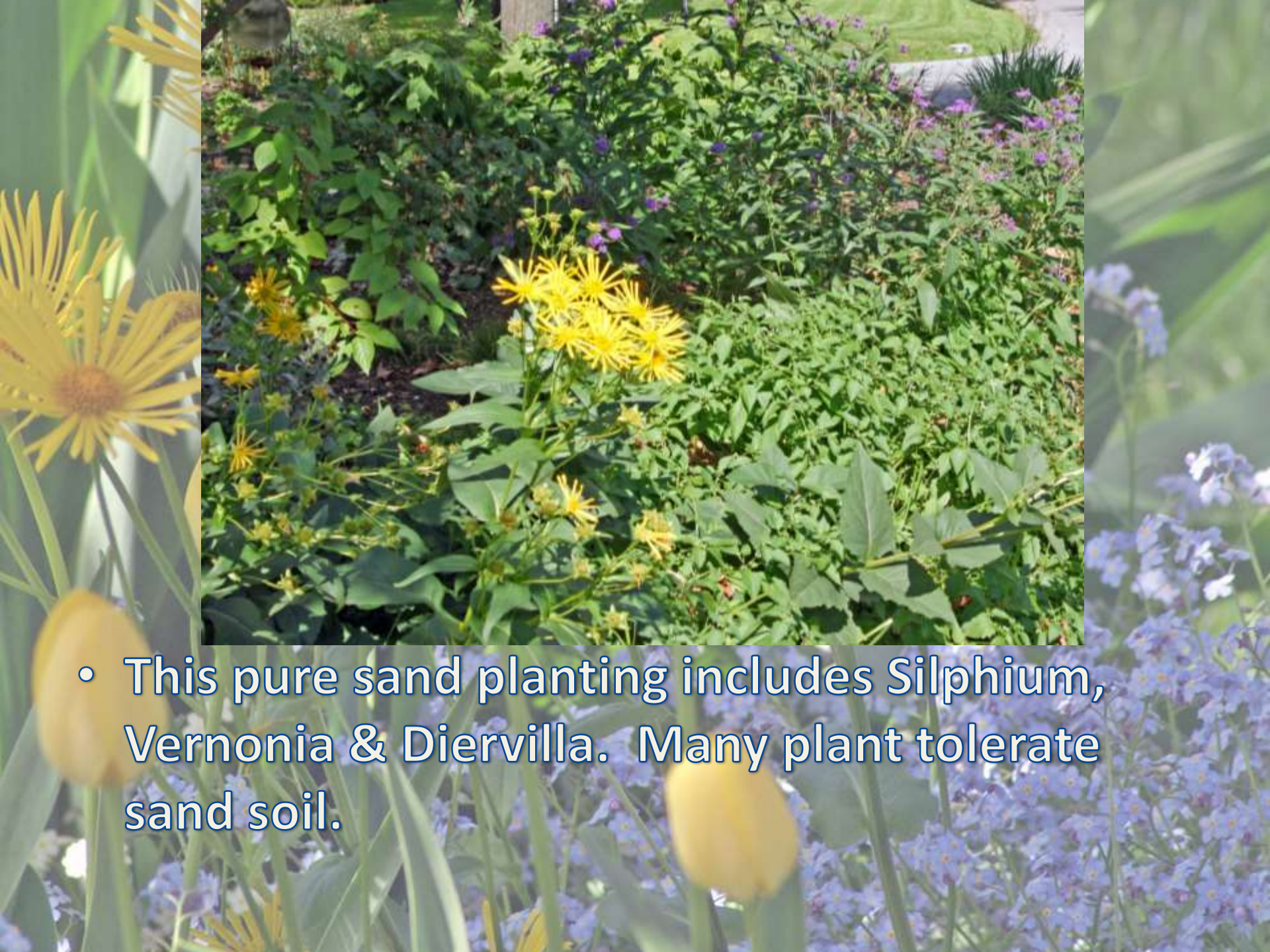
Soil (This garden is in clay soil!)



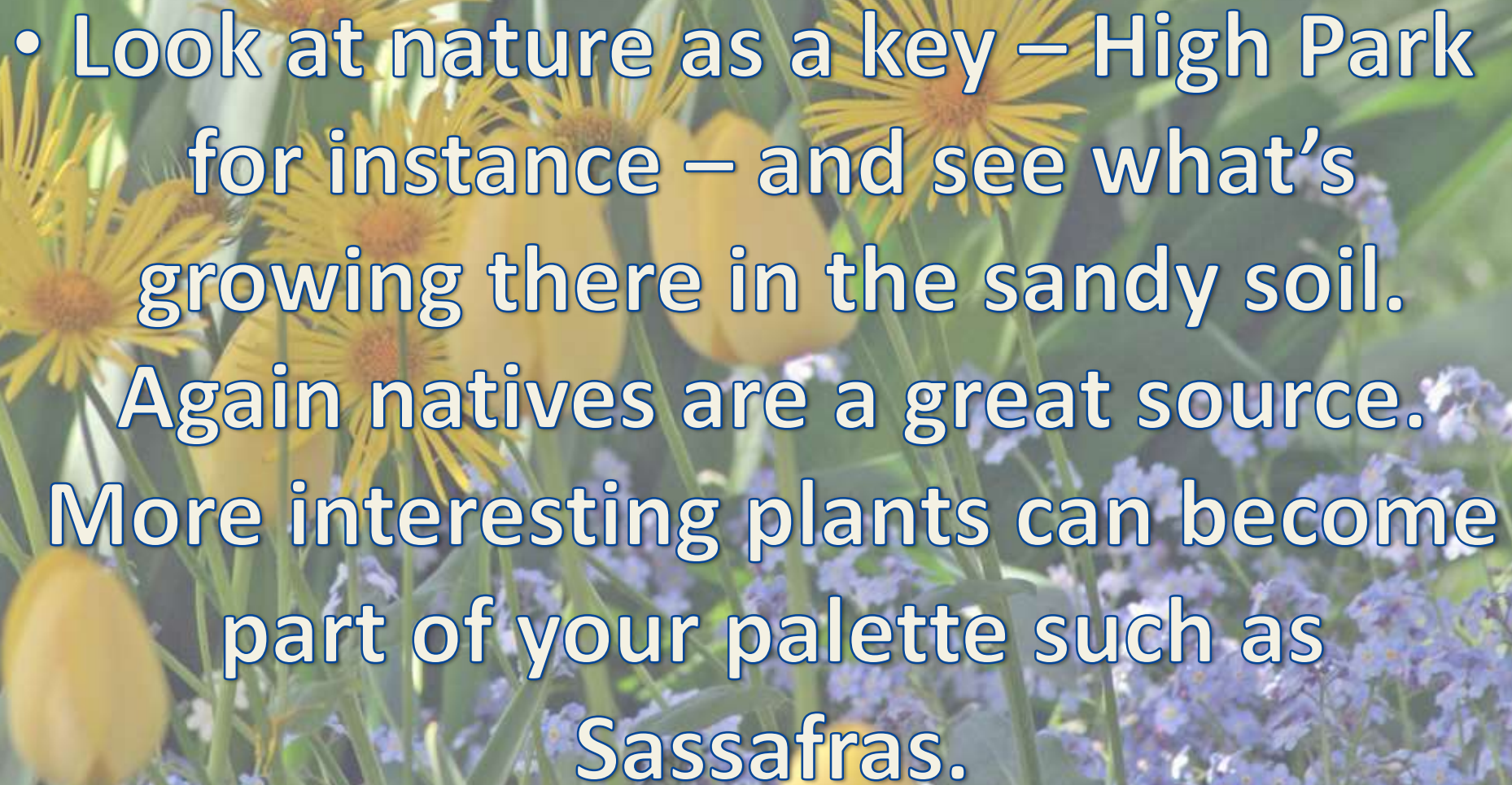
A garden scene featuring several yellow coneflowers in the foreground and middle ground, with a dense cluster of small purple flowers in the lower right. The background is filled with green foliage, including what appears to be a hosta. The text is overlaid on the image in a white, bold, sans-serif font with a thin black outline.

- Many plants including coneflower, roses, asters, hostas, spirea, most natives, asparagus, potentilla, dogwood, grasses and many more are perfect in clay.

- Plant trees **SMALL** to aid them in establishment.



- This pure sand planting includes Silphium, Vernonia & Diervilla. Many plant tolerate sand soil.

- 
- A vibrant garden scene featuring several yellow daisies with dark brown centers in the foreground and middle ground. Interspersed among them are clusters of small, delicate purple flowers. The background is filled with lush green leaves and stems, creating a sense of depth and natural beauty. The overall lighting is bright and natural, highlighting the textures of the petals and leaves.
- Look at nature as a key – High Park for instance – and see what’s growing there in the sandy soil. Again natives are a great source. More interesting plants can become part of your palette such as *Sassafras*.




Scree

(a garden planted entirely in 'A' gravel!)



- ^Opuntia humifusa
- Armeria maritima->



A vibrant garden scene featuring several yellow daisies in the foreground, yellow tulips in the middle ground, and a dense cluster of small purple flowers in the background. The background is softly blurred, creating a sense of depth.

Find specialty nurseries such as the
Country Squires Garden in
Campbellville to teach you the neat
stuff and feel free to think on your
own – deep roots = good for scree.

Lost Horizons in Acton and

www.gardenimport.com are also
great

BTW...Native cacti are wicked!

Echinacea and Helictotrichon and many more are perfect in gravel if watered for the first year.

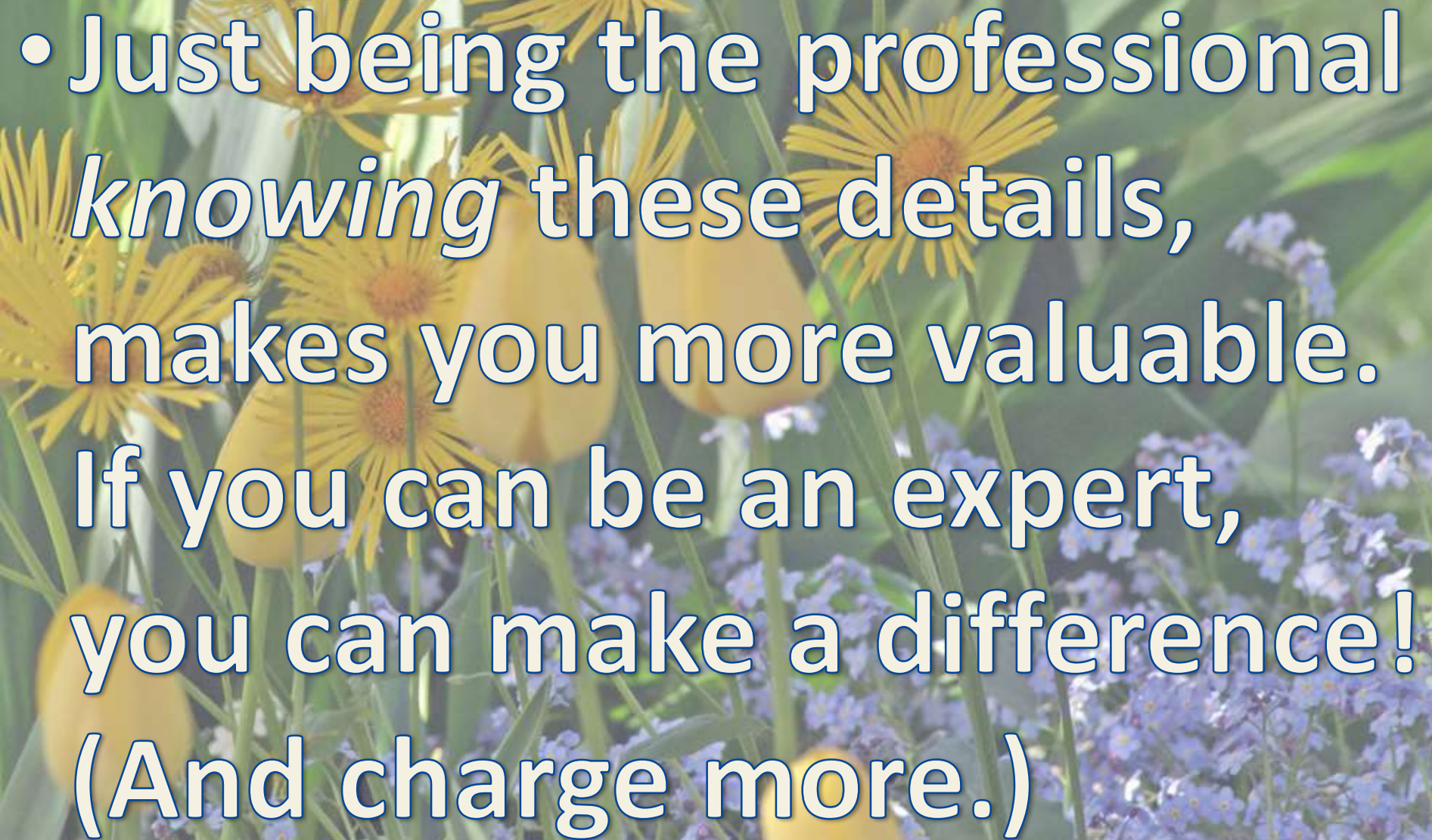




People are fascinated by Scree Gardens.
Sempervivum, Sedums, Cacti and Fescues
are all suited to scree.

Sand is NOT limiting!
Just know your pallet.
(*Asclepias tuberosa*)



- 
- A vibrant field of flowers, featuring several large yellow daisy-like flowers in the foreground and a dense cluster of small purple flowers in the background. The scene is set against a backdrop of lush green foliage.
- Just being the professional *knowing* these details, makes you more valuable. If you can be an expert, you can make a difference! (And charge more.)


Texture:
feathery,
sword-shaped,
bold!
Rudbeckia
trilobata,
Crambe
maritima, Yucca
& Panicum



A vibrant garden scene featuring a variety of flowers. In the foreground, several yellow tulips are in bloom, their petals bright and slightly blurred. Behind them, numerous yellow daisies with dark brown centers are scattered throughout. The background is filled with a dense field of small purple forget-me-nots. The overall lighting is bright and natural, suggesting a sunny day in a well-maintained garden.

The most important message

- Flowers come and go.
Texture will make or break
your landscape!



Hydrangea
quercifolia
Oak-Leaf
Hydrangea

- Great fall colour and great texture!



Texture:

Typha, Lobelia, Nymphaea, Iris & Nelumbo

Miscanthus 'Variegatus', Daphne 'Carol Mackie' and Hosta





- *Rubus oderatus*, *Tanacetum*, *Aconitum carmichaelii* & *Hosta* – a great shade combo. (*Rubus oderata* is a great plant for dry shade!)



Texture: Hosta and Alchemilla



Colour:
Compliment or contrast
Fagus 'Purpurea Pendula,
Agastache, Rudbeckia.



Aubrieta, Aurinia,
Arabas ->



Siberian Iris, Heuchera & Blue Oat Grass

Miscanthus 'Zebrinus' &
Chrysanthemum rubellum
'Princess Margaret' ->



<- Monarda 'Cambridge
Scarlet' & Liatris spicata



- Liliium

'Anaconda' &
Delphinium

'Magic
Fountains'



A great yellow combo
Rubus 'Golden Vale' &
Hibiscus purpurea
'Varietata' & more!



Copyright 2006 © Sean James NPD

<- Liatris &
Coreopsis 'Moonbeam'



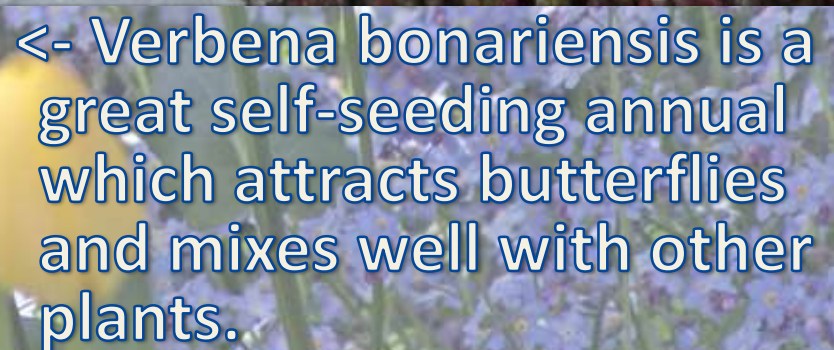
Copyright 2006 © Sean James NPD

Perovskia & edible

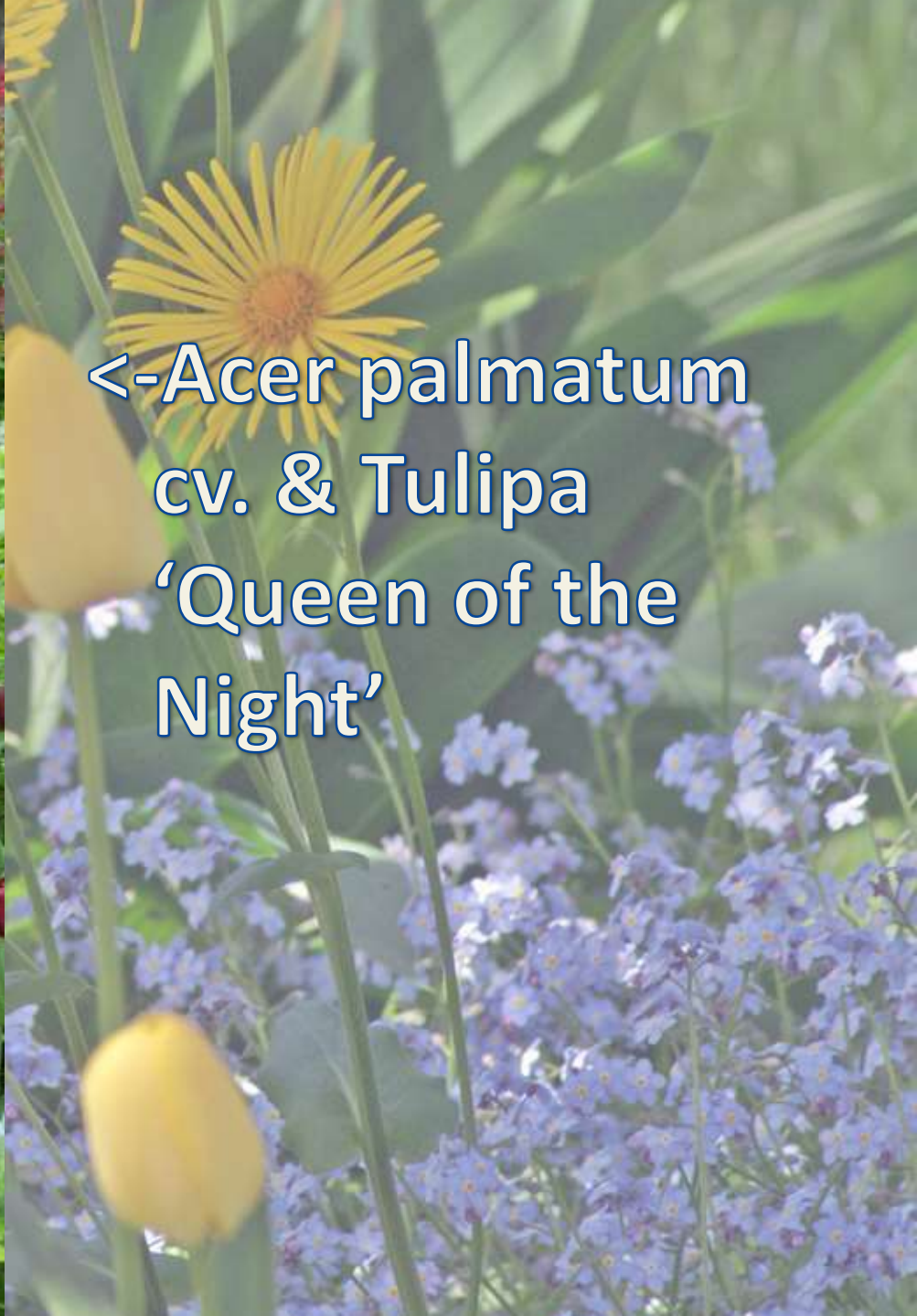
(!) Kale ->



Berberis 'Golden Nugget',
Coreopsis & Sedum ->



<- *Verbena bonariensis* is a great self-seeding annual which attracts butterflies and mixes well with other plants.



<-Acer palmatum
cv. & Tulipa
'Queen of the
Night'



<- *Oenothera fruticosa* &
Lychnis coronaria –
pedestrian but effective.
Don't shun common
plants.

Ajuga 'Chocolate Chip' &
Heucherella cv. ->





Annual Plectranthus
and ornamental
Pepper ->



<- Rosa 'New Dawn'
&
the tropical
Passiflora

Check out the trial gardens at LO



Solidago 'Fireworks' &
Helenium – a great fall
combo ->



Think of pictures in
magazines. 'The
People' are looking
for those gardens.



Exclamation Points

Use stand-out
plants to make
the design step
out.

<-Laburnum, Wisteria
'Lawrence', Dicentra &
Brunnera



Don't forget
winter!

Miscanthus floridulus
10' tall! And one of only 2 non-
invasive Miscanthus->

Massing: Large drifts of plants are more impactful. (Note the white flowers with the white bark)



Individual plants can be lost in large landscapes





<- Imperata at the Niagara Parks Botanical Garden



Copyright 2006 © Sean James NPD



Cosmos -^

<- Betula nigra

Nature doesn't do things in 2's. Stick to odd numbers.

Seasonal
Interest – Winter is
KEY

Echinacea purpurea

V



^Clematis tangutica

<- Juniperus pingii &
Miscanthus 'Cosmopolitan'



Cornus 'Elegantissima' &
Rudbeckia (with
Miscanthus floridulus
in the background) ->





Copyright 2006 © Sean James NPD

-Great for wet or dry soil, and native...Ilex verticillata is our native Holly and offers great winter interest.

(also the right plant for the space)



- Although it can be invasive so watch where you plant it, Pyrus 'Capital' is a great plant for a small space and offers white flowers and great fall colour.

Exposure: be aware of sun vs. shade



Exposure:

And THIS is why
you need to know
your plants.

Geranium macrorrhizum -



<- Deer's Tongue
Grass – great for
shade.

Habitat & It's Benefits



Encouraging Biodiversity has HUGE benefits for your landscapes!

- Having birds is not only nice but birds are excellent at controlling pests.
- Having a diverse landscape ensure that no pest will completely decimate your gardens.
- Many insects are excellent predators of pests.
- Biodiversity helps protect our ability to produce food.

Habitat & It's Benefits:
Crataegus phaenopyrum
30% shelter helps bring birds. Birds control pests.



Natives like *Asclepias tuberosa* & *Sagittaria* are examples of beautiful plants for wet areas.



The Red Oak – great fall colour and almost 500 species of butterflies/moths feed on it – therefore good for birds.



Bogs clean water! (Use nature as a guide)



Create Miniature Ecosystems.





<-Typha sp.

Caltha palustris->

Sagittaria sagitifolia V



Copyright 2006 © Sean Jan



(and these are all edible too!)

Trying New Things

<-Daphne 'Brigg's
Moonlight

Copyright 2006 © Sean James NPD



Echinacea 'Razzamataz' ->





Heuchera
'Stop Light' ->



<-Heuchera 'Splish
Splash'



From the top:
Solidago 'Fireworks',
Aster 'Little Barlow'
and Amsonia
hubrechtii



Veronica 'Georgia Blue' &
Sedum 'Angelina' ->



Copyright 2009 © Sean James

<-Tulipa 'Angelina' – a
changeable tulip!



< Picea
orientalis
'Skylands'
Tierella 'Sugar &
Spice' V





<- Various asters,
Perovskia & Solidago
'Fireworks'



Muscari 'Valerie Finnis' - >



Copyright 2006 © Sean James NPD

Permaculture
← Calamagrostis &
edible Kale



^ Swiss Chard



Sambucus 'Black
Lace' & Squash...

Amazing texture

Attractive to birds

Edible (BOTH)

Matteuccia & Asarum canadense





Edible greens are pretty, useful and
very in vogue!

Asparagus

- Also suited to clay soils!
- Oh, and great texture, fall colour and edible. Know your plants

